



HELLO



Join the fun!

Activities	Description	When
Census Highlighting Events	Having events on site for more information and to register, please call us or visit us.	Tuesday 1:30-3:30 pm
United Medical Enrollment	United Health Insurance will be on site to help with enrollment. Please call us to register.	Tuesday 3:30-5:30 pm
Winter Wonderland	Toy Drive for children up to 16 years of age. Sponsored by the Bayway Family Foundation. Registration is closed for 2020.	Dec. 21 st , 22 nd , 23 rd by appointment
Book Clubs (Parents & Kids)	Looking for all the bookworms out there! Join us as we explore new worlds one book at a time. Book club via zoom.	Tuesday @ 4pm
Family Fun Nights	For all our families and friends of all ages. Thursdays are for family fun. Join us by calling or visiting us today!	Thursdays @ 5:30pm
Expert Family Game Night	We are taking family fun to the next level! Meet us at Expert Gamers' Corner (220 Second St., Elizabeth, NJ).	Designated Thursdays 5:30pm
Dad's Connect	Calling all dads! Check out our calendar for programs that empower the male role models in our lives. Call for more information.	Designated Mondays @ 4pm
Mom's Circle	Calling all moms with children ages 0-17! Check out our calendar for programs on maternal health and wellness. Call for more information.	1 st & 3 rd Monday's 12:30pm-2pm
W.O.W.	Women of Worth Initiative. Empowerment group for women ages 18+. Call for more information or to register today!	4 th Wednesday of the month
Resume writing/Guided Job Search	Looking for employment and building a resume can be a stressful task. Let us help you! Call for more information from our staff. In person one-on-one, by appointment only. Zoom appointments are also available.	Fridays by appointment
New Life Direction	Assistance with NJ, PA, and VA grant applications. In person one-on-one, by appointment only. Zoom appointments are also available.	By appointment. Call now!

We are taking one-on-one appointments and small group programming please call our number to schedule yours today!



We're Here to Help

Take our quick Survey so we can better understand your needs!

Families and Partners

If you would like to hear more about related resources, let us know in the comment section of the survey

We will contact you directly

Link Below:

**TAKE A
QUICK SURVEY**

HEALTH AND WELL-BEING

We understand past few months have been challenging and do hope you & your families are SAFE AND WELL

The Bayway FSC is here to provide the most up to date information to help you & your families

Share this information with anyone who may need

No time like the present!

Take time to check out some activities, resources & tons more offered by our partners (Thank you!)

Webinars free!

Videos will be shared via links or check out our Facebook for more info!

Remote Hours Are 9am-5pm, Monday-Friday

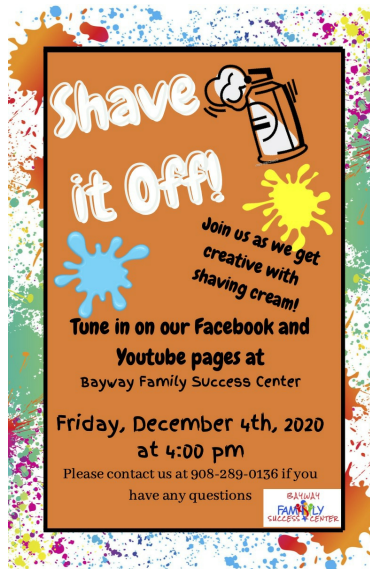
Call us at 908-289-0136

or reply to this email

**From Us & Our Neighbors
Thank you!**



Weekly Events!



FREE!

ENGLISH CONVERSATIONAL CLASS

Practice your English with us every Wednesday from 5:00pm to 6:00pm on Zoom!

We will help you be able to:

- Start and sustain **conversations!**
- Use a variety of **vocabulary, grammar and phrases**
- Make English-speaking **friends!**

For more information, call (908) 289-0136

Made with PosterMyWall.com

BAYWAY FAMILY SUCCESS CENTER

FREE!

ENGLISH CONVERSATIONAL CLASS

Practice your English with us every Wednesday from 5:00pm to 6:00pm on Zoom!

We will help you be able to:

- Start and sustain **conversations!**
- Use a variety of **vocabulary, grammar and phrases**
- Make English-speaking **friends!**

For more information, call (908) 289-0136

Made with PosterMyWall.com

BAYWAY FAMILY SUCCESS CENTER

ONLINE TUTORING SESSIONS

zoom
ONLINE EDUCATION
Pre-K to 5th

- ✓ MATHEMATICS
- ✓ SCIENCE
- ✓ READING
- ✓ WRITING

neishalouhar@therapist.net
201-241-2886

Neisha Louhar, MS, RBT

Send us a message to register



Union County
Programa de detección de cáncer de NJCED
EXAMEN DE CÁNCER GRATIS

Sin seguro ó con seguro insuficiente

Mujeres: senos, cervical y colorrectal
Hombres: próstata y colorrectal

Puede salvar tu vida

LLAME
A los siguientes Proveedores para determinar SI USTED CALIFICA y hacer una cita

Localidad	Agencia y Dirección	Servicio	Teléfono
Elizabeth	Trinitas Regional Medical Center 655 East Jersey Street, Elizabeth NJ 07206	Mujer	908-994-8244
Linden	Jersey Diagnostic Imaging 929 Northwood Avenue, Linden NJ 07036	Mujer	908-241-5222
Roselle	NP Healthcare Associates 221 Chestnut St. Suite 203 Roselle, NJ 07068	Mujer	908-245-2615
Hoboken	Hoboken Family Planning 124 Grand Street, Hoboken NJ 07030	Hombre	201-963-4300

* Criterios de edad: exámenes de detección de cáncer de mama, limitado a mujeres sin seguro o con seguro insuficiente de 40 a 74 años, y mujeres más jóvenes si tienen alto riesgo. Exámenes de detección de cáncer de cuello uterino, cada 3 a 5 años desde los 30 hasta los 64 años. Exámenes de detección de cáncer colorrectal: hombres y mujeres de 45 años o más, limitado a la prueba de sangre y hombres y mujeres más jóvenes si tienen alto riesgo. Exámenes de detección de cáncer de próstata: Análisis de sangre PSA para hombres de 55 a 69 años y hombres más jóvenes si es de alto riesgo.

Criterios de ingreso: Menos del 251% de la definición federal de pobreza.

Este programa NJCED del condado de Union es posible gracias a una subvención del Departamento de Salud de Nueva Jersey. El Programa es administrado por Hoboken Family Planning, Inc. Tel. 201-963-4300

11/2020

Union County
NJCED Cancer Screening Program
FREE CANCER SCREENING

Uninsured & Underinsured

Women: Breast, Cervical & Colorectal
Men: Prostate & Colorectal

It Could Save Your Life

CALL
Provider Listed Below To Determine IF YOU QUALIFY & Make an Appointment

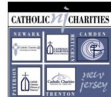
Location	Agency & Address	Service	Telephone
Elizabeth	Trinitas Regional Medical Center 655 East Jersey Street, Elizabeth NJ 07206	Women	908-994-8244
Linden	Jersey Diagnostic Imaging 929 Northwood Avenue, Linden NJ 07036	Women	908-241-5222
Roselle	NP Healthcare Associates 221 Chestnut St. Suite 203 Roselle, NJ 07068	Women	908-245-2615
Hoboken	Hoboken Family Planning 124 Grand Street, Hoboken NJ 07030	Men	201-963-4300

* Age Criteria: Breast Cancer Screening, limited to uninsured and underinsured women age 40 to 74, and younger women if high risk; Cervical Cancer Screening, every 3 or 5 years from age 30 to 64; Colorectal Cancer Screening, men and women age 45 and above, limited to FIT test and younger men and women if high risk; Prostate Cancer Screening PSA blood test for men age 55 to 69 and younger men if high risk.

Income Criteria: Less than 251% of federal definition of poverty.

This Union County NJCED Program is made possible by a Grant from the New Jersey Department of Health. The Program is administered by Hoboken Family Planning, Inc. Tel. 201-963-4300

10/2020



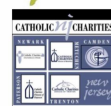
SERVICIOS PARA CONSEJERIA DE CRISIS

Para aquellos que se sienten
afectados por la pandemia de
COVID-19

En colaboración con otros socios estatales, Catholic Charities, de la
Nueva Jersey les provee consejería de crisis a aquellos afectados por
la pandemia del COVID-19. Si usted o cualquier persona siente
necesidad de hablar con alguien, favor de llamar:

732-204-6510

This program is a Crisis Counseling Program (CCP) is brought to you by NJ Hope
and Healing, Catholic Charities Community Services in collaboration with the New
Jersey Department of Human Services' Division of Mental Health and Addiction
Services, Disaster and Terrorism Branch, through a FEMA grant.



CRISIS COUNSELING SERVICES

For those affected by the COVID-
19 pandemic

Through a statewide partnership, Catholic Charities
of New Jersey is providing crisis counseling
to those impacted by the COVID-19 pandemic. If you
or anyone you know needs to speak with someone, call:

732-204-6510

This program is a Crisis Counseling Program (CCP) is brought to you by NJ Hope
and Healing, Catholic Charities Community Services in collaboration with the New
Jersey Department of Human Services' Division of Mental Health and Addiction
Services, Disaster and Terrorism Branch, through a FEMA grant.



Bereavement Support Group - Monmouth Medical Center

Bereavement Support Group
(via Phone) - Monmouth
Medical Center The
bereavement group will be
held via telephone on the 4th
Wednesday of every month,
from 7:30 - 8:30. Those
interested must register by
calling 732-923-6090, at which
time a...

[Read more](http://www.rwjbh.org)
www.rwjbh.org



Coronavirus (COVID19) Parent Resources | RWJBarnabas Health

These resources are to
help parents learn more
about coronavirus
(COVID-19) and how to
teach your children
health safety tips to help
prevent the spread of
germs.

[Read more](http://www.rwjbh.org)
www.rwjbh.org

COVID-19

Recursos en Español

RWJBarnabas
HEALTH

COVID-19 Recursos en español | RWJBarnabas Health

COVID-19 Recursos
en español. Cómo
coser una máscara
de tela

[Read more](http://www.rwjbh.org)
www.rwjbh.org

NEED HOUSING ASSISTANCE?

The DCAid tool is a quick and simple process that allows
people to find out if they are eligible for **housing
assistance programs, utility
assistance, homelessness prevention services,**
and other programs that will help to improve their
quality of life

The eligibility screening process is a series of questions
that takes approximately 1-2 minutes to complete. Users
can find out if they are eligible for DCA services that
provide assistance with rent, including the Section 8
Housing Choice Voucher Program and the State Rental
Assistance Program, **heating costs, utility
bills,** removal of lead hazards in the home, Veterans

NEW JERSEY

P-EBT



1234 5601 2345 6789
NJ Cardholder

NJ SNAP

When will I get my P-EBT benefits?
P-EBT benefits will be issued in
June, but an exact date is not known
at this time. Your one-time benefit will

Affair Supportive Housing (VASH), weatherization assistance, and homelessness prevention programs. The results, based on general income and household information entered, will provide the user with a brief description of eligible programs with contact information for the agency where the user can apply.

be available when you receive and activate your card. How do I get my P-EBT benefits?

[Read more](#)
www.nj.gov

DCAID ELIGIBILITY TOOL

When the Coronavirus Hits Home: Putting Child Care Plans in Writing Just in Case

POWER OF ATTORNEY DOCUMENT

Steps to protect yourself and children, the POA form that designates a temporary legal guardian in the event a parent or parents become ill or incapacitated

Facebook



EMERGENCY MEDICAID

Assistance for undocumented individuals

YOU MAY QUALIFY FOR EMERGENCY MEDICAID (PE)

Requirements: includes but not limited to:

- have no documentation from the U.S Citizen and Immigration Service; or
- Are non-immigrant (students, temporary workers, or children of a worker or visitor on business; or
- Are a qualified alien who is subject to the 5-year bar* on Medicaid, such as lawful permanent residents, aliens granted parole for a least one year, and certain victims of domestic violence. (this 5-year bar does not apply to children and pregnant women)

Links below will link you to more info:

[**Qualification/Requirements**](#)

[**Explanation of Program**](#)





Your Good Health — Our Dedication.

Do you need health insurance?
WellCare can provide you with
**NO-COST or LOW-COST HEALTH
INSURANCE** through NJ FamilyCare.

Call for more information:

WellCare	1-888-433-2334 (TTY) 1-877-347-4272
NJ FamilyCare	1-800-762-0760 (TTY) 1-800-762-0760

WellCare Health Plans

CENTRAL JERSEY LEGAL SERVICES



During this time of staying at home and social distancing, CJLS remains committed to providing free legal help to low-income residents of Central NJ. We are still providing the same services we always have. Staff are working remotely and are here to help both new and existing clients. Our telephone messages are being monitored and responded to as quickly as possible. If you need legal assistance, call the CJLS office in your county and leave a detailed message or email us at cjls@lnj.org. Someone will get back to you. Stay Safe!

CALL US:

Merger County
609-695-6249

Middlesex County
732-249-7600

Union County
908-354-4340

Email
CJLS@LSNJ.ORG

www.centraljerseylegalservices.org



With any concerns please reach us at

908-875-0034

or our Facebook and Instagram

Search: Bayway Family Success Center

Department of Human Services' Novel Coronavirus Information Page

This page contains the the latest resources, policy guidance,
and program updates available at this time

For the most UPDATED INFO on COVID-19

Check out this link

Call (General COVID-19 Questions) 2-1-1 (7a-11p)

Call (Medical COVID-19 Questions) 1-800-962-1253 (24/7)

Text NJCOVID to 898-211 to receive alerts

REMEMBER:

Wash your hands

Stay home, especially if you are not well

& disinfect surfaces daily

Stay 6ft away from individuals

